





EVACUATION SIGN

EVACUATION PROCEDURES

- Follow all instructions given by Wardens or Emergency Officers
- Leave immediately by the nearest safe exit
- Move quickly, do not run
- If possible, close doors behind you
- Report to your designated assembly area
- Do not leave the assembly area until the designated Emergency Officer gives the "all-clear"
- If any injuries are sustained, notify and Emergency Officer
- Advise an Emergency Officer immediately if you are aware of people trapped in the building

SAFETY CONSIDERATIONS

-  **R**emove persons from immediate danger
-  **A**lert nearby staff and members of the public and call 000 (operate manual call point if possible)
-  **C**onfine fire and smoke, close windows and doors (if safe) and keep low under the smoke
-  **E**xtinguish and control the fire (if safe to do so)

FIRE EXTINGUISHERS

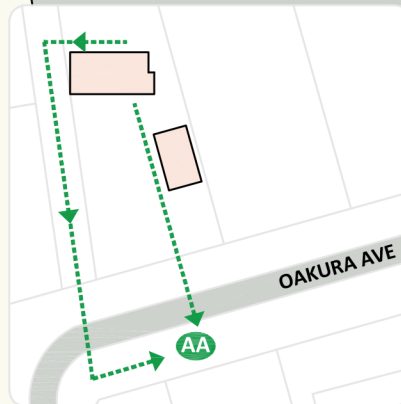
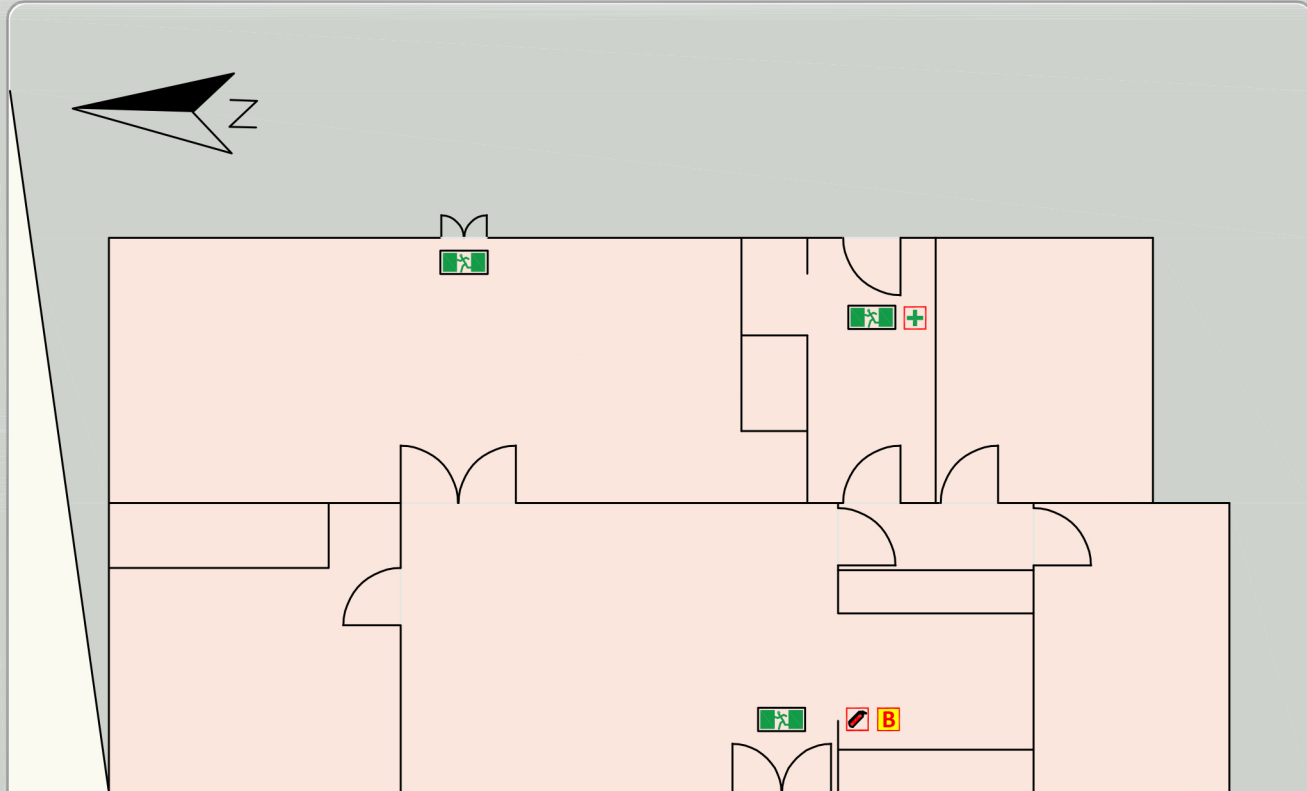
Operating Instructions & Applications

- P**ull the pin
- A**im the nozzle
- S**queeze the trigger
- S**weep the base of the fire

	Water	Wet Chemical	Foam	Dry Chemical Powder ABE	Carbon Dioxide CO2	Vapourising Liquid	Fire Blanket
A Ordinary Combustible (Wood, Paper, Plastics, etc)	✓	✓	✓	✓	✗	✓	✓
B Flammable and Combustible Liquids	✗	✗	✓	✓	✓	✓	✓
C Flammable Gases	✗	✗	✗	✓	✗	✗	✗
E Energised Electrical Equipment	✗	✗	✗	✓	✓	✓	✗
F Cooking Oils & Fats	✗	✓	✓	✓	✗	✗	✓

Quakers NSW

4 Oakura Ave, Woodford



MAP KEY



FIRE EXTINGUISHER



FIRE BLANKET



FIRST AID POINT



EXIT POINT



EVACUATION ROUTE



ASSEMBLY AREA